

TH Series

Multi-Stage Power-Line Filters With Differential Mode Choke (1-100A)



Typical application

- For digital systems (particularly for switching power supplies) to suppress continuous or intermittent pulse interference
- For low impedance loads

Features and benefits

- High performance filters
- Low leakage current

Conformity

- CE EN 60939
- CSA C22,2 | available on request for most types
- UL 1283 | available on request for most types
- Climatic category 25/085/21 (IEC 60068-1)

Technical specifications

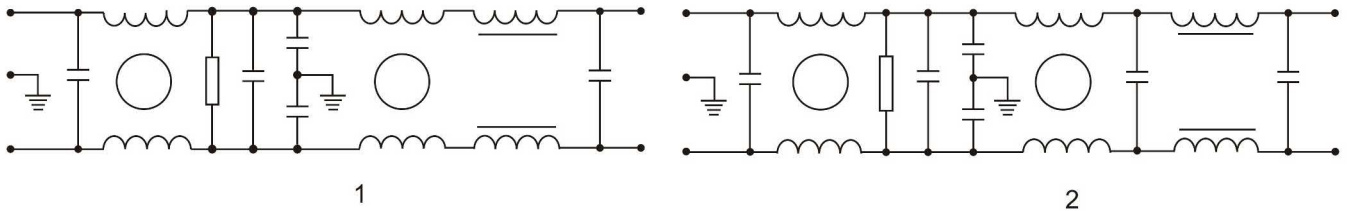
	Symbol	Value	Unit	Remarks
Rated voltage	V_R	250	VAC	
Rated current	I_R	1 ... 100	A	
Ground capacitance		3.3 ... 6.8	nF	
Operating frequency	f_{op}	50/60	Hz	
Insertion loss		up to 100/100	dB	common/differential mode
Leakage current	I_l	0.5 ... 1.0	mA	
Operating temperature	T_{amb}	-25 ... +85	°C	
Storage temperature	T_S	-25 ... +85	°C	
Test voltage - line to line	V_{test}	1500	VDC	
Test voltage - line to ground	V_{test}	1500	VAC	

Electrical properties

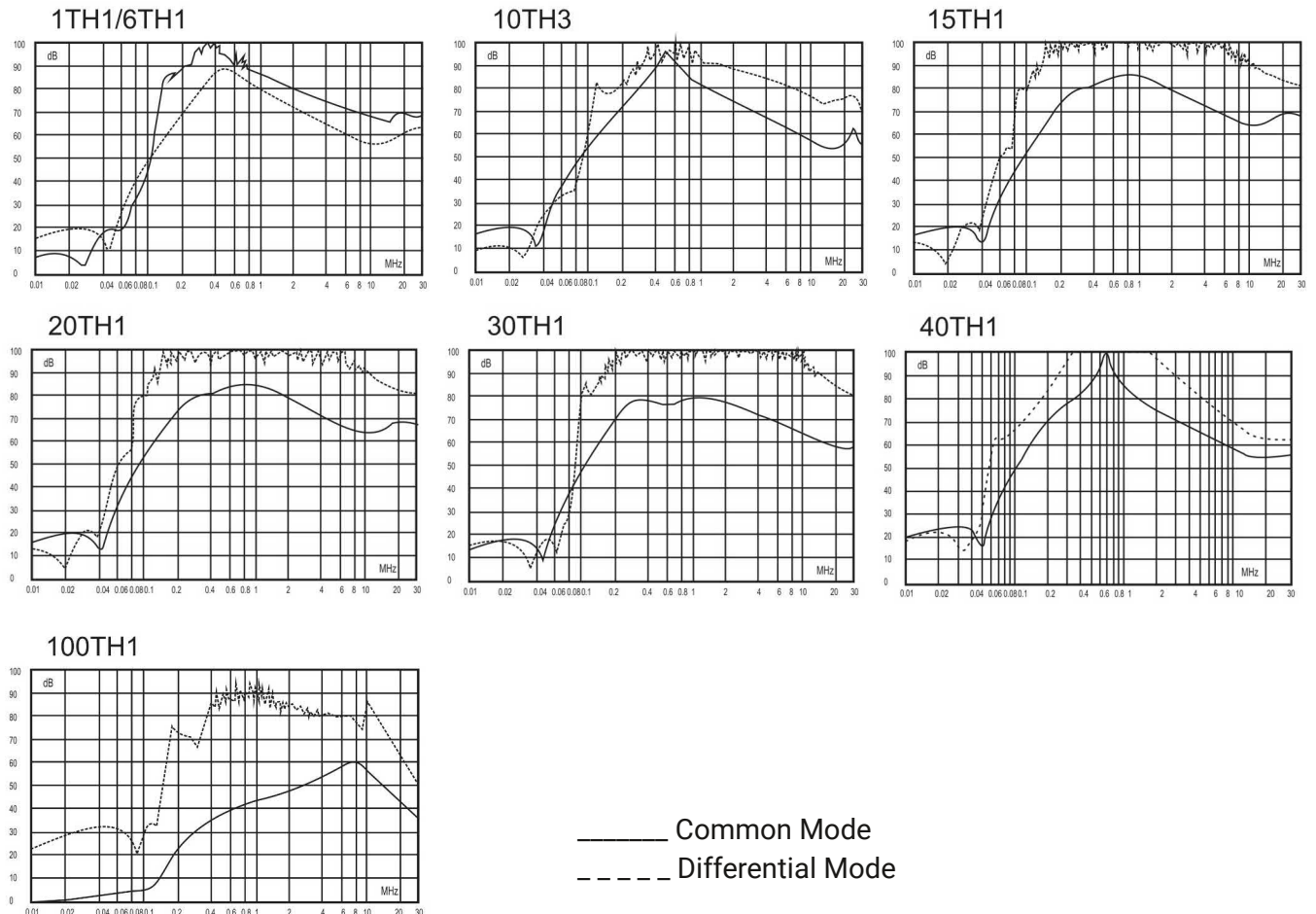
Model	Connection		Rated Current [A]	Ground Capacitance [nF]	Leakage Current [mA]	Discharge Resistance [MΩ]	Circuit Diagram	Package Type	Size (LxBxH) [mm]
	Line	Load							
DL-1TH1	F	F	1	3.3	0.5	1	1	A	89.5x50.5x28
DL-6TH1	F	F	6	3.3	0.5	1	1	A	103x57x45
DL-10TH3	S	S	10	3.3	0.5	1	1	E	max. 138x95.3x84
DL-15TH1	S	S	15	3.3	0.5	1	2	G	max. 162x60x70
DL-20TH1	S	S	20	3.3	0.5	1	2	G	max. 162x60x70
DL-30TH1	S	S	30	3.3	0.5	1	2	G	max. 162x60x70
DL-40TH1	S	S	40	54.0	0.8	0.68	2	G	max. 282x70x100
DL-100TH1	S	S	100	6.8	1.0	1	2	G	282x96x125

Legend: F = FASTON 6.3 S = screw terminal

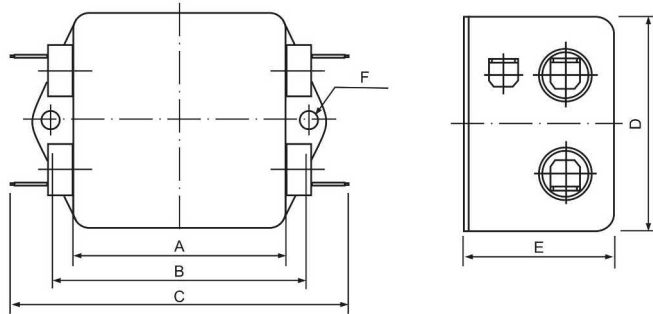
Circuit schematic



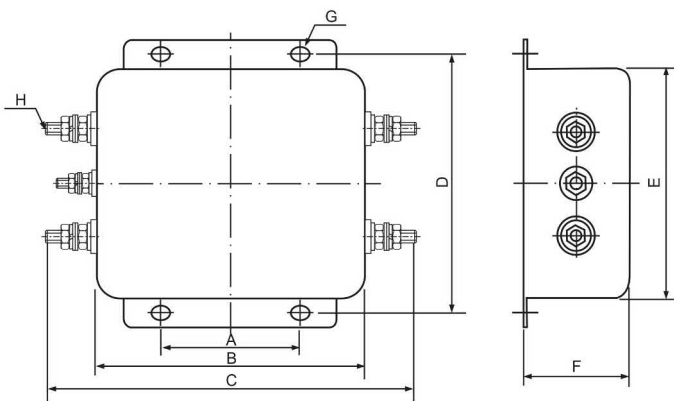
Insertion loss characteristics



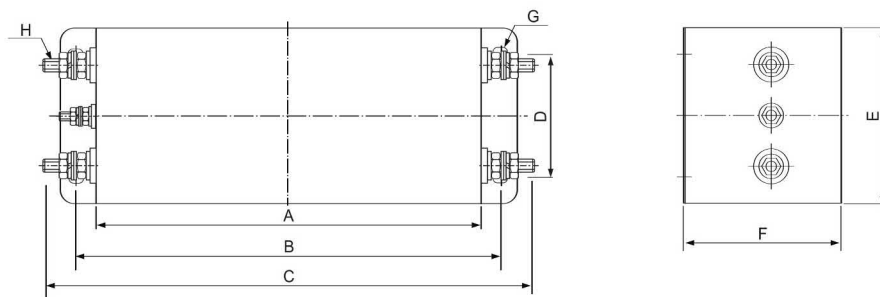
Mechanical packaging



A...



E...



G...

Metralytica GmbH
Oehleckerring 13
22419 Hamburg
Germany

www.metralytica.eu

+49 40 5936175-00
sales@metralytica.eu