

PC Series

PCB Mounting DC Filters (1-16A)



Typical application

- Modular power supplies
- Small electronic instruments

Features and benefits

- PCB mounting
- Compact design

Conformity

- CE EN 60939
- CSA C22,2 | available on request for most types
- UL 1283 | available on request for most types
- Climatic category 25/085/21 (IEC 60068-1)

Technical specifications

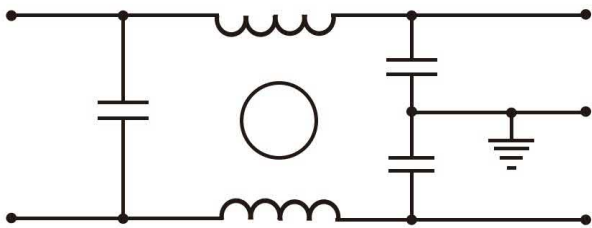
	Symbol	Value	Unit	Remarks
Rated voltage	V_R	250	VAC	
Rated current	I_R	1 ... 16	A	
Ground capacitance		2.2 ... 4.7	nF	
Operating frequency	f_{op}	50/60	Hz	
Insertion loss		up to 72/80	dB	common/differential mode
Leakage current	I_l	≤ 0.8	mA	
Operating temperature	T_{amb}	-25 ... +85	°C	
Storage temperature	T_s	-25 ... +85	°C	
Test voltage - line to line	V_{test}	1500	VDC	
Test voltage - line to ground	V_{test}	1500	VAC	

Electrical properties

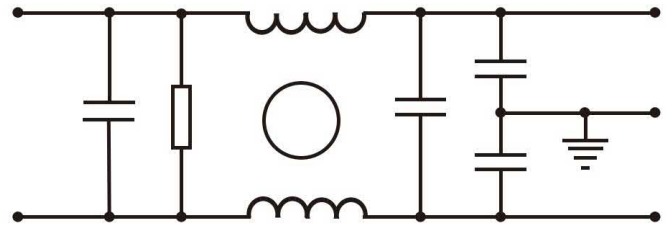
Model	Connection		Rated Current [A]	Ground Capacitance [nF]	Leakage Current [mA]	Discharge Resistance [MΩ]	Circuit Diagram	Package Type	Size (LxBxH) [mm]
	Line	Load							
DL-1PC	PCB	PCB	1	2.2	0.5		1	H	8x25x15
DL-2PC	PCB	PCB	2	2.2	0.5		1	H	8x25x20
DL-3PC	PCB	PCB	3	2.2	0.5		1	H	8x25x20
DL-6PC	PCB	PCB	6	3.3	0.5		1	H	8x25x20
DL-6PC2	PCB	PCB	6	3.3	0.5		1	H	7.5x30x20
DL-3PC2	PCB	PCB	3	4.7	0.8	1.5	2	H	11.5x35x27
DL-3PC4	PCB	PCB	3	2.2	0.5		3	H	11.5x35x27
DL-16PC	PCB	PCB	16	2.2	0.5		4	H	12.5x50.8x29

Legend: PCB = printed circuit board mounting

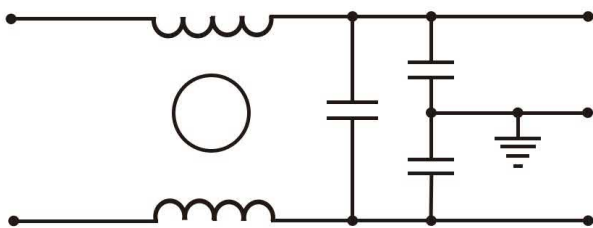
Circuit schematic



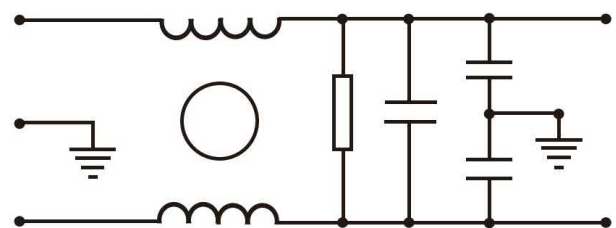
1



2

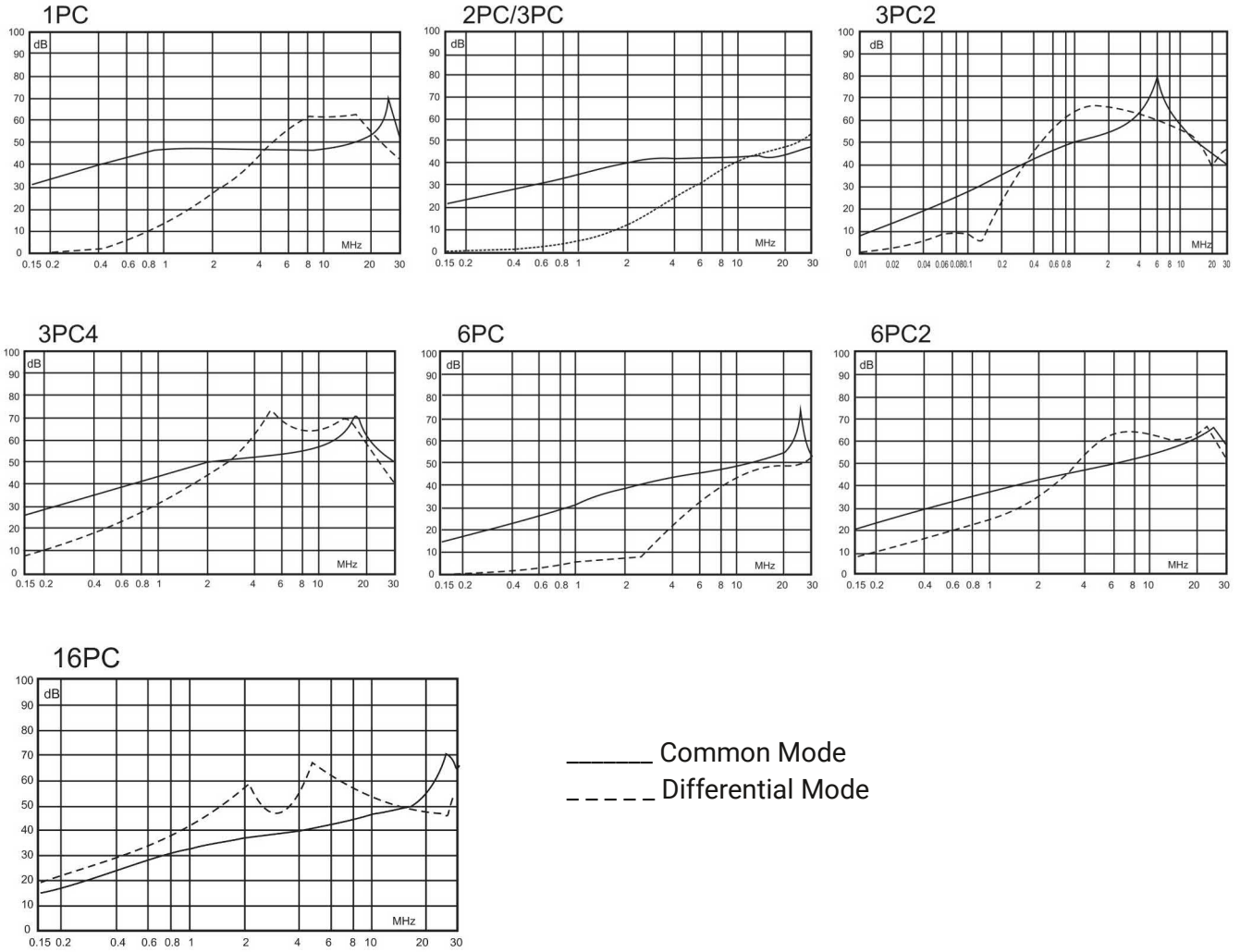


3

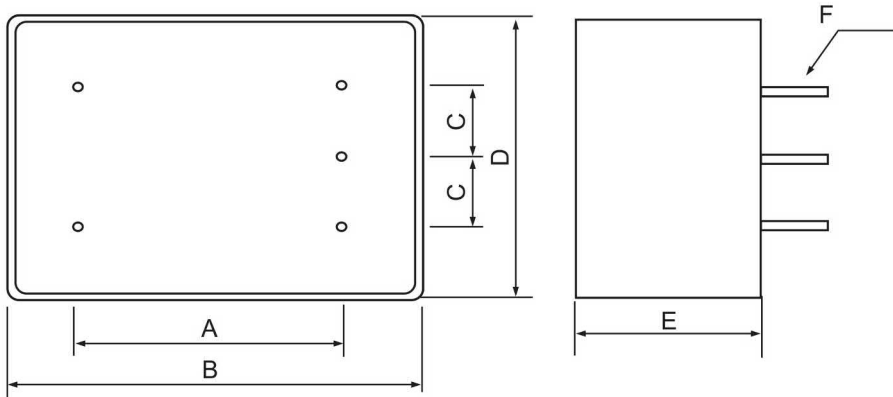


4

Insertion loss characteristics



Mechanical packaging



H...

Metralytica GmbH
Oehleckerring 13
22419 Hamburg
Germany

www.metralytica.eu

+49 40 5936175-00
sales@metralytica.eu