

DH Series

General Purpose Power-Line Filters (1-200A)



Typical application

- For switching power supplies & converters

Features and benefits

- With differential mode choke
- Excellent performance/cost ratio

Conformity

- CE EN 60939
- CSA C22,2 | available on request for most types
- UL 1283 | available on request for most types
- Climatic category 25/085/21 (IEC 60068-1)

Technical specifications

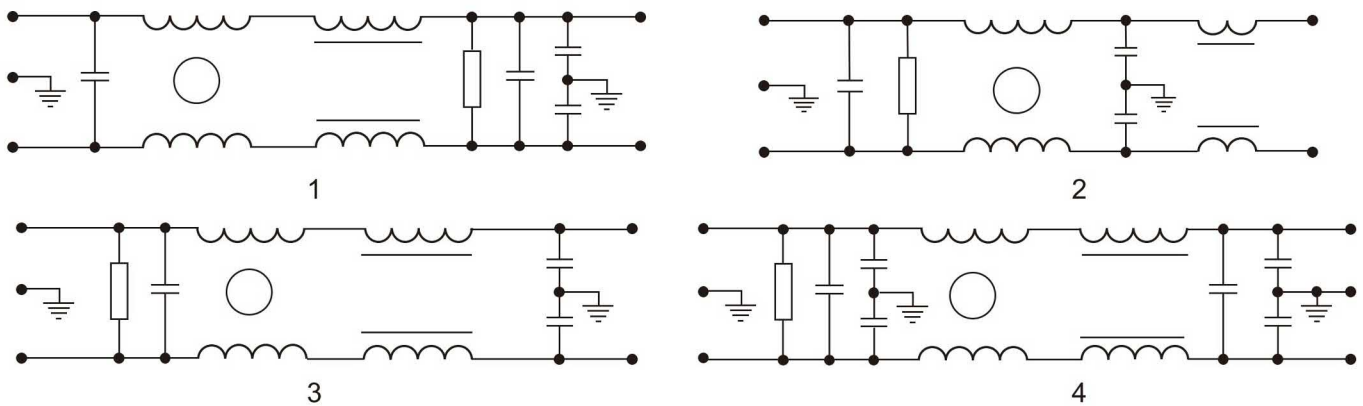
	Symbol	Value	Unit	Remarks
Rated voltage	V_R	250	VAC	
Rated current	I_R	1 .. 1000	A	
Ground capacitance		2.2-6.8	nF	
Operating frequency	f_{op}	50/60	Hz	
Insertion loss		up to 90/100	dB	common/dfferential mode
Leakage current	I_l	0.5 ... 20	mA	
Operating temperature	T_{amb}	-25 ... +85	°C	
Storage temperature	T_s	-25 ... +85	°C	
Test voltage - line to line	V_{test}	1500	VDC	
Test voltage - line to ground	V_{test}	1500/2250	VAC/VDC	

Electrical properties

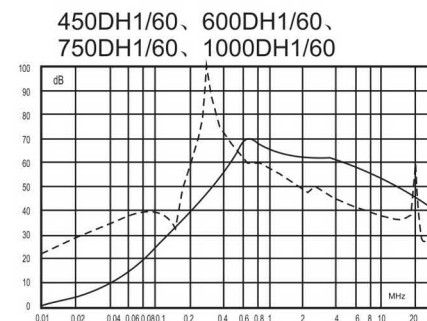
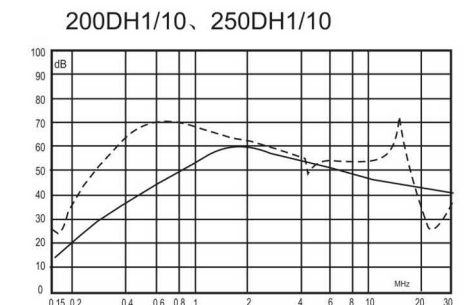
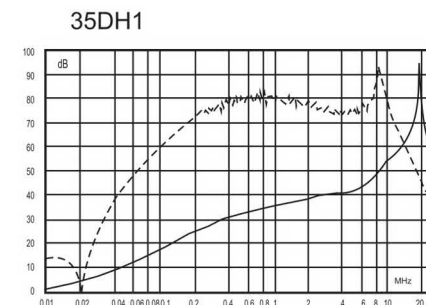
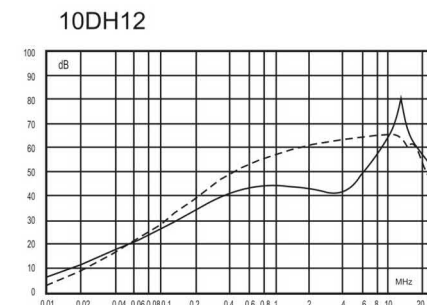
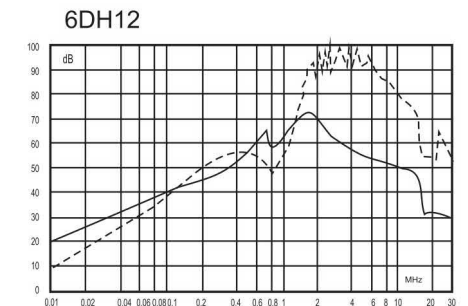
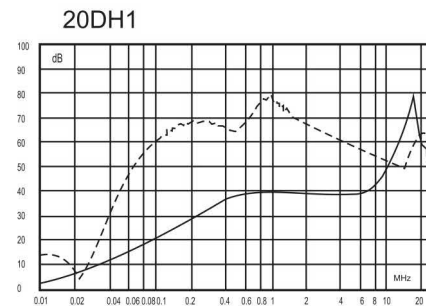
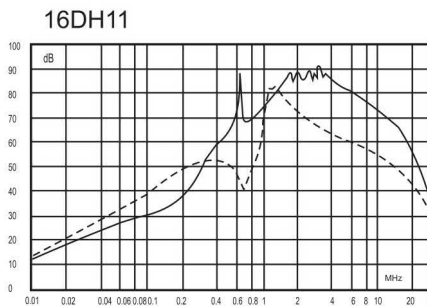
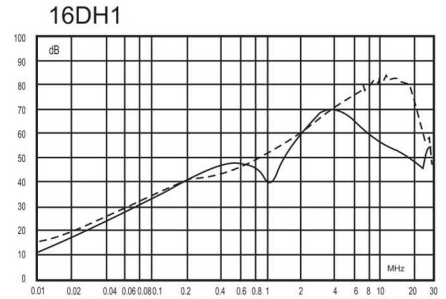
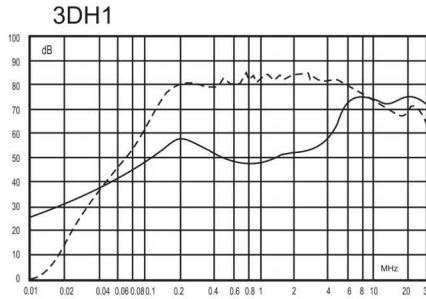
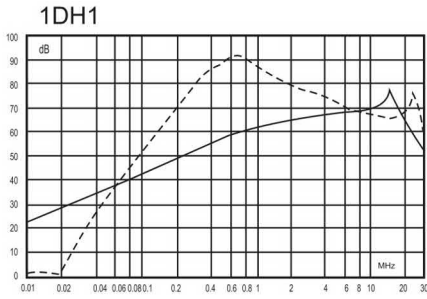
Model	Connection		Rated Current [A]	Ground Capacitance [nF]	Leakage Current [mA]	Discharge Resistance [MΩ]	Circuit Diagram	Package Type	Size (LxBxH) [mm]
	Line	Load							
DL-1DH1	F	F	1	4.7	0.8	0.44	1	A	89.5x50.5x28
DL-3DH1	F	F	3	4.7	0.8	0.44	1	A	103x57x45
DL-6DH12	F	F	6	4.7	0.8	1	2	A	103x57x45
DL-10DH12	F	F	10	4.7	0.8	1	3	A	93.5x50.5x46
DL-16DH1	F	F	16	4.7	0.8	1	2	C	125x57x50
DL-16DH11	F	F	16	10	1.7	1	2	C	150x57x50
DL-20DH1	S	S	20	4.7	0.8	1	1	D	126x80x45
DL-35DH1	S	S	35	3.3	0.5	1	1	F	max. 210x69x51
DL-200DH1/10	S	S	200	44	10	0.68	4	G	max. 235x112x140
DL-300DH1/10	S	S	300	44	10	0.68	4	G	max. 235x112x140
DL-450DH1/60	B	B	450	220	20	0.68	4	J1	max. 348x182x92
DL-600DH1/60	B	B	600	220	20	0.68	4	J1	max. 348x182x92
DL-750DH1/60	B	B	750	220	20	0.68	4	J2	max. 434x201x111
DL-1000DH1/60	B	B	1000	220	20	0.68	4	J2	max. 434x201x111

Legend: F = FASTON 6.3 S = screw terminal B = bus bar

Circuit schematic

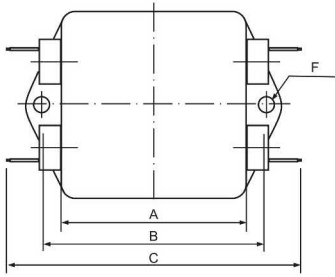


Insertion loss characteristics

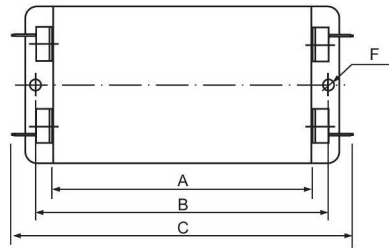
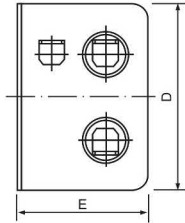


_____ Common Mode
 - - - - - Differential Mode

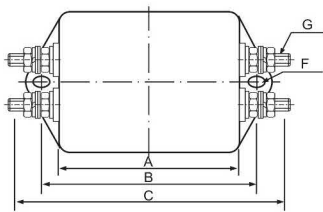
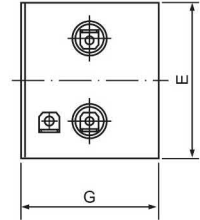
Mechanical packaging



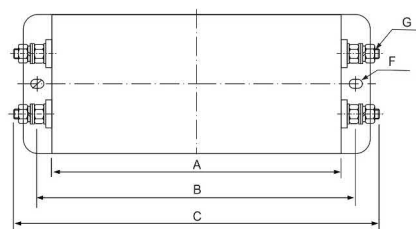
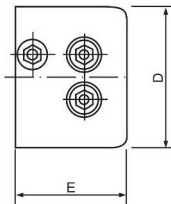
A...



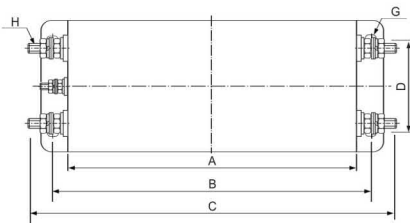
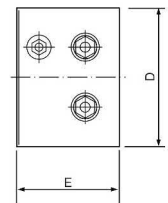
C...



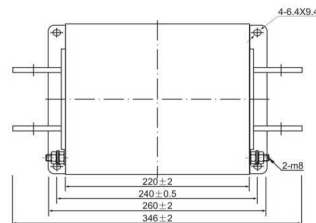
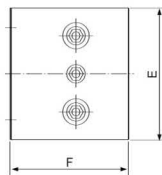
D...



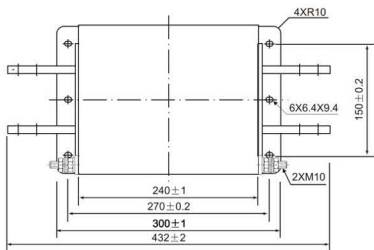
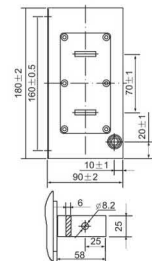
F



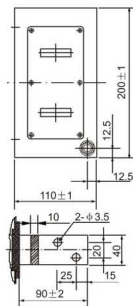
G...



J1...



J2...



Metralytica GmbH
Oehleckerring 13
22419 Hamburg
Germany

www.metralytica.eu

+49 40 5936175-00
sales@metralytica.eu