

EBT1 Series High Performance Power-Line Filters (5-80A)



Typical application

- Strong interference environments, e.g. inverter for speed control systems

Features and benefits

- 3-phase, 3-line
- Excellent performance for both common and differential mode suppression starting from low frequency
- Low leakage current

Conformity

- CE EN 60939
- CSA C22,2 | available on request for most types
- UL 1283 | available on request for most types
- Climatic category | 40/085/21 (IEC 60068-1)

Technical specifications

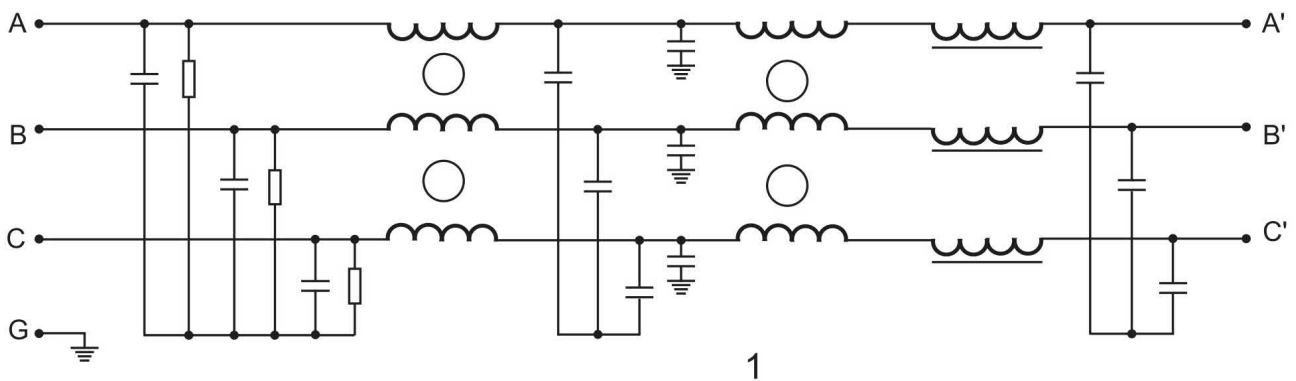
	Symbol	Value	Unit	Remarks
Rated voltage	V_R	440/250	VAC	
Rated current	I_R	5 ... 80	A	
Ground capacitance		47 ... 100	nF	
Operating frequency	f_{op}	50/60	Hz	
Insertion loss		up to 100/100	dB	common/differential mode
Leakage current	I_l	---	mA	
Operating temperature	T_{amb}	-40 ... +85	°C	
Storage temperature	T_S	-40 ... +85	°C	
Test voltage - line to line	V_{test}	1500	VDC	
Test voltage - line to ground	V_{test}	2250	VDC	

Electrical properties

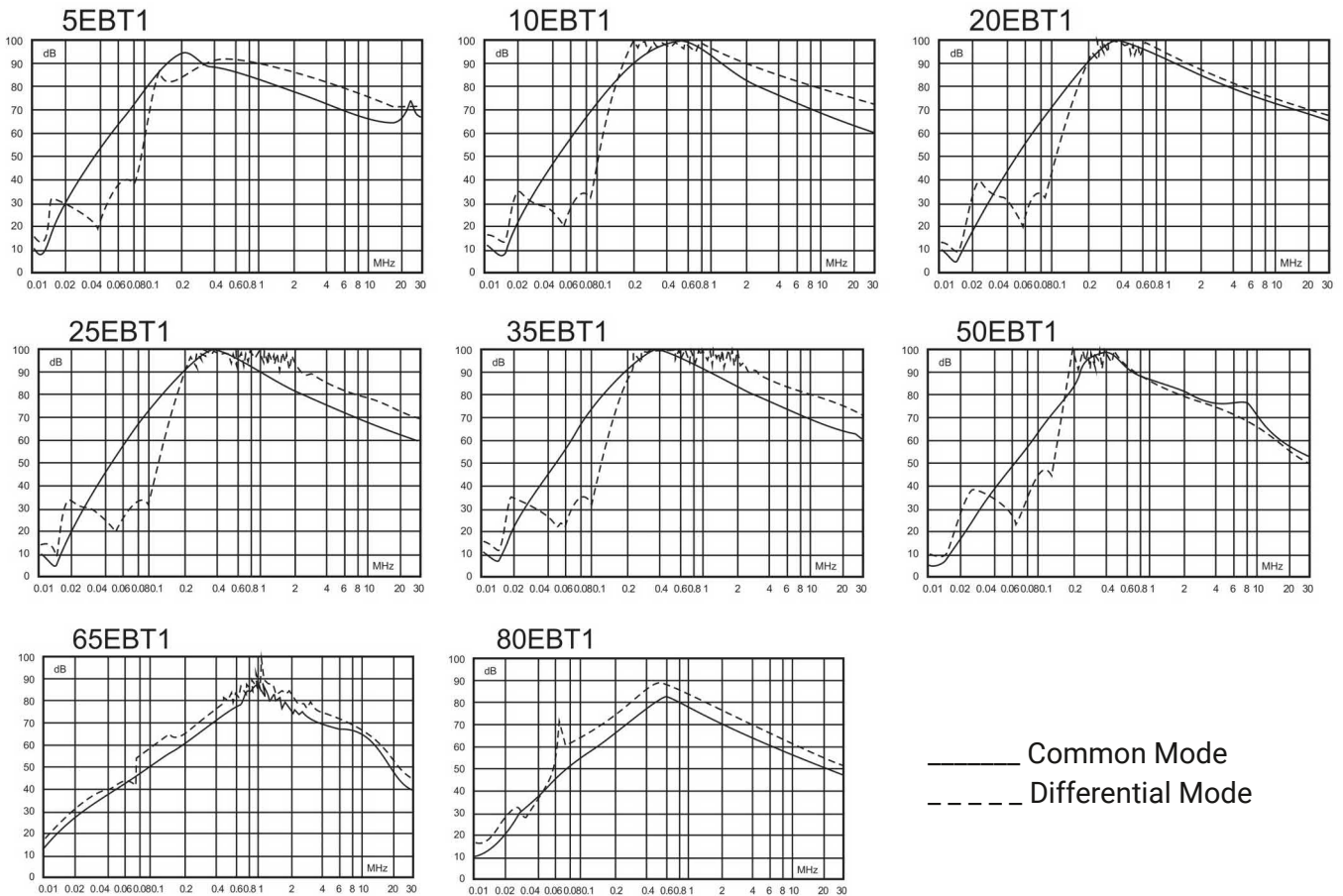
Model	Connection		Rated Current [A]	Ground Capacitance [nF]	Discharge Resistance [MΩ]	Circuit Diagram	Package Type	Size (LxBxH) [mm]
	Line	Load						
DL-5EBT1	S	S	5	47	220	1	1	202x42x60
DL-10EBT1			10	47	220			
DL-20EBT1			20	47	220			
DL-25EBT1	S	S	25	47	220	1	1	261x58x70
DL-35EBT1			35	47	220			
DL-50EBT1			50	100	220			
DL-65EBT1	S	S	65	100	220	1	1	384x66x155
DL-80EBT1			80	100	220			

Legend: S = screw terminal

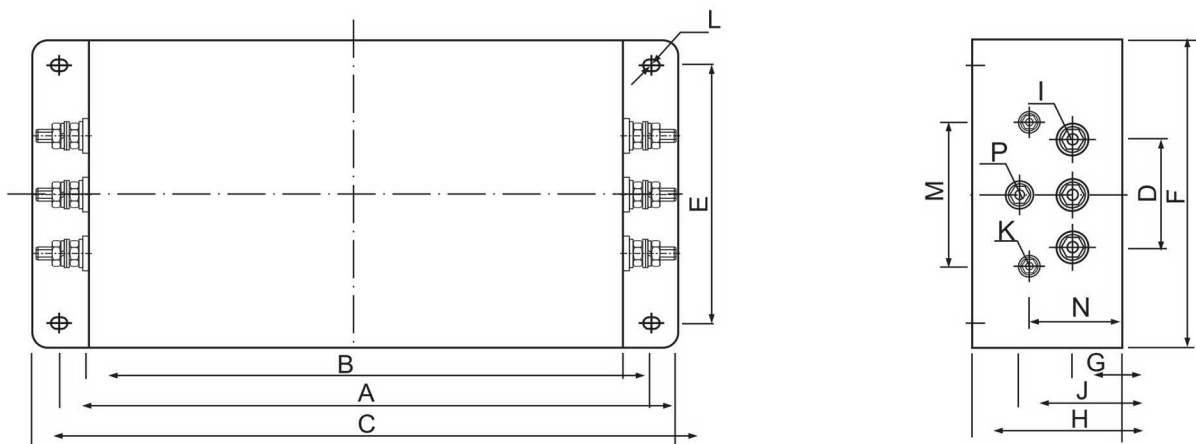
Circuit schematic



Insertion loss characteristics



Mechanical packaging



Metralytica GmbH
Oehleckerring 13
22419 Hamburg
Germany

www.metralytica.eu

+49 40 5936175-00
sales@metralytica.eu