

EB15/50 Series

General Purpose Power-Line Filters (7-75A)



Typical application

- For strong interference environments, e.g. inverter equipment

Features and benefits

- 3-phase, 3-line
- Excellent attenuation from 150KHz to 30MHz
- Terminal block for easy connection
- Compact and light

Conformity

- CE EN 60939
- CSA C22,2 | available on request for most types
- UL 1283 | available on request for most types
- Climatic category | 40/085/21 (IEC 60068-1)
- Protection category | IP 20

Technical specifications

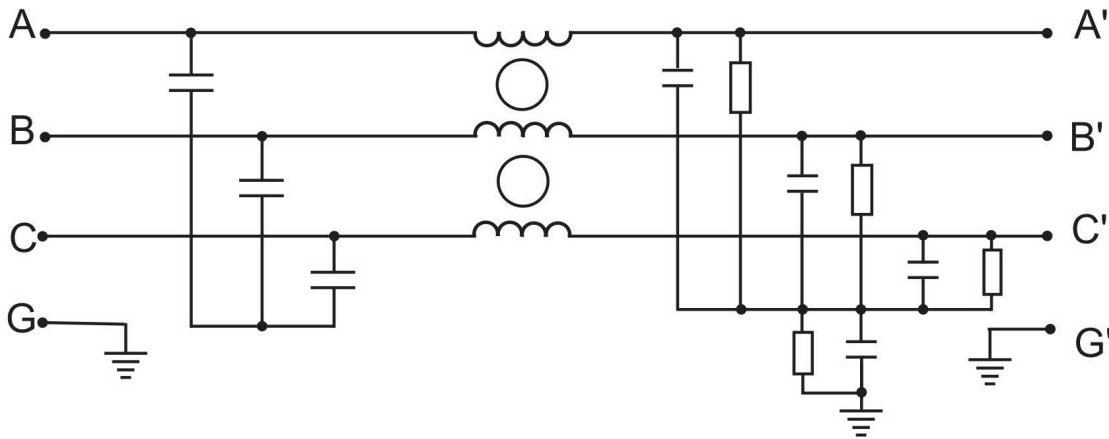
	Symbol	Value	Unit	Remarks
Rated voltage	V_R	480/275	VAC	
Rated current	I_R	7 ... 75	A	
Ground capacitance		1.75	nF	
Operating frequency	f_{op}	50/60	Hz	
Insertion loss		up to 100/100	dB	common/dfferential mode
Leakage current	I_l	33	mA	
Operating temperature	T_{amb}	-40 ... +85	°C	
Storage temperature	T_S	-40 ... +85	°C	
Test voltage - line to line	V_{test}	1500	VDC	
Test voltage - line to ground	V_{test}	2250	VDC	

Electrical properties

Model	Connection		Rated Current [A]	Ground Capacitance [nF]	Leakage Current [mA]	Discharge Resistance [MΩ]	Circuit Diagram	Package Type	Size (LxBxH) [mm]
	Line	Load							
DL-7EB15/50	iS	iS	7	1.75	33	1.5/0.68	1	1	40x160x180
DL-10EB15/50	iS	iS	10	1.75	33	1.5/0.68	1	1	40x160x180
DL-16EB15/50	iS	iS	16	1.75	33	1.5/0.68	1	1	45x220x235
DL-30EB15/50	iS	iS	30	1.75	33	1.5/0.68	1	1	50x240x255
DL-42EB15/50	iS	iS	42	1.75	33	1.5/0.68	1	1	50x280x295
DL-55EB15/50	iS	iS	55	1.75	33	1.5/0.68	1	1	80x220x235
DL-75EB15/50	iS	iS	75	1.75	33	1.5/0.68	1	1	80x240x255

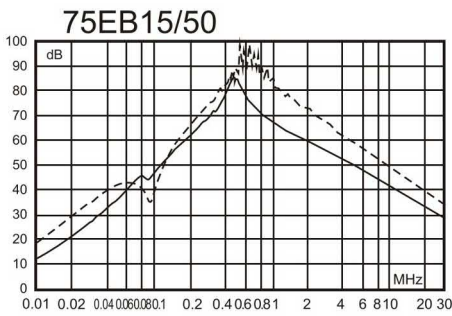
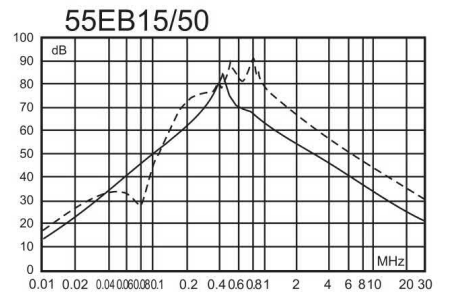
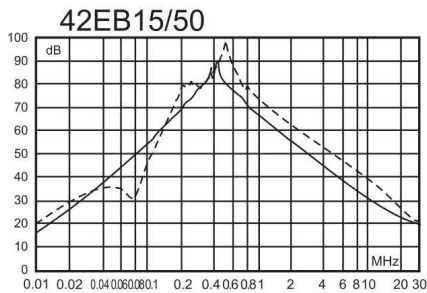
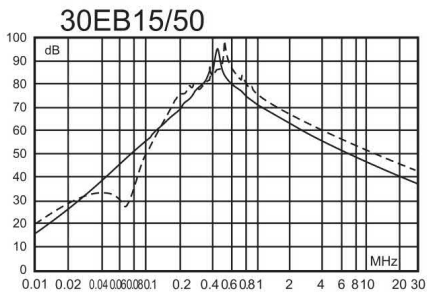
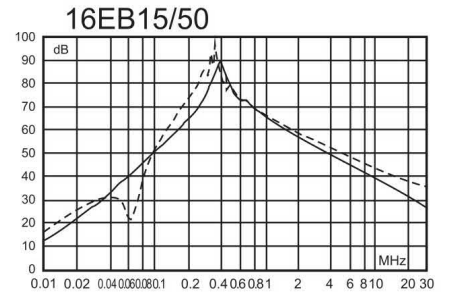
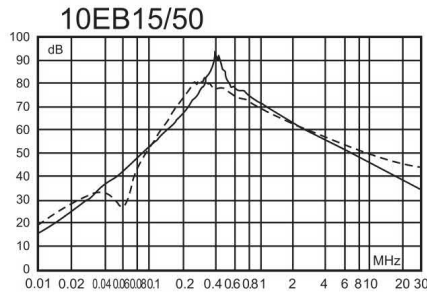
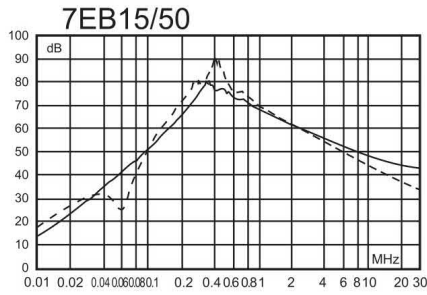
Legend: iS = insulated screw terminal

Circuit schematic



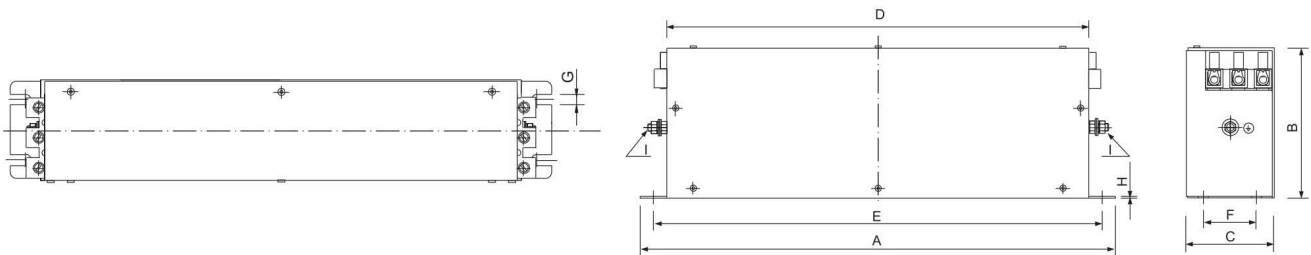
1

Insertion loss characteristics



_____ Common Mode
 - - - - - Differential Mode

Mechanical packaging



Metralytica GmbH
Oehleckerring 13
22419 Hamburg
Germany

www.metralytica.eu

+49 40 5936175-00
sales@metralytica.eu